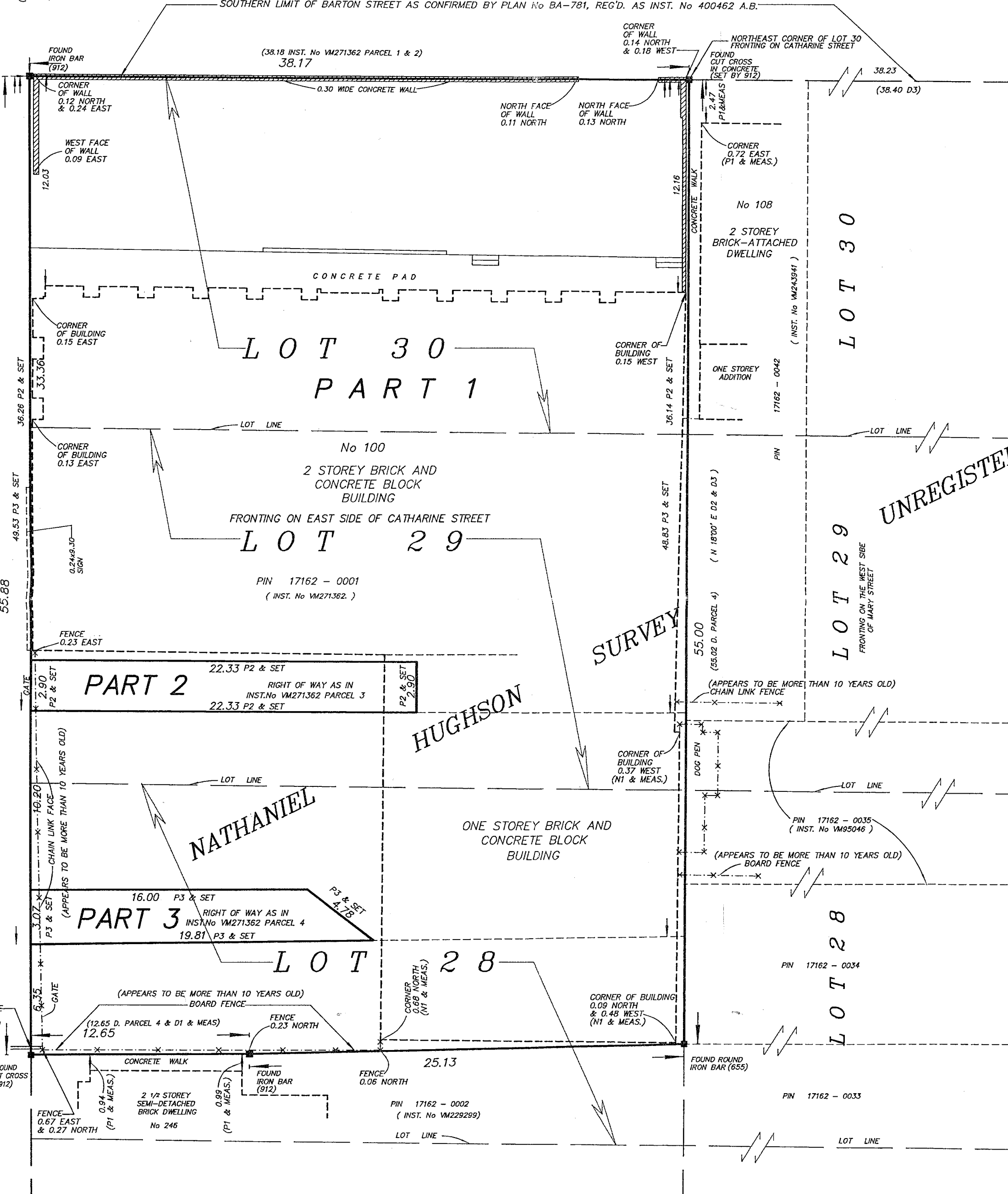


BARTON STREET EAST

(ORIGINAL ROAD ALLOWANCE BETWEEN CONCESSIONS 1 AND 2)

SOUTHERN LIMIT OF BARTON STREET AS CONFIRMED BY PLAN No BA-781, REG'D. AS INST. No 400462 A.B.

(NOT TO SCALE)
200.7
(P. & MEAS.)



UNREGISTERED

SURVEY

HUGHSON

NATHANIEL

BEARINGS ARE UTM GRID, DERIVED FROM POINTS (A) AND (B) BY REAL TIME NETWORK UTM ZONE 17, NAD83 (CSRS)(1997)

DISTANCES ARE GROUND AND CAN BE CON MULTIPLYING BY THE COMBINED SCALE FAC

OBSERVED REFERENCE POINTS: UTM ZONE 17 COORDINATES TO URBAN ACCURACY PER SE

POINT ID	NORTHING
(A)	

