

BLAIR BLANCHARD STAPLETON

LIMITED, REAL ESTATE BROKERAGE

RETAIL/OFFICE UNIT FOR LEASE

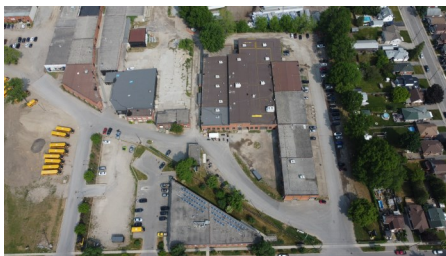
BBSREALTY.COM

\$18.00

PER SQ. FT. NET

723

SQUARE FEET



111 Sherwood Drive, Unit 12, Brantford, ON

PROPERTY DETAILS

NET LEASE RATE	\$18.00 psf
SIZE	723 Sq Ft
T.M.I. (2023)	\$2.70 psf
AIR CONDITIONING	Partial
CLEAR HEIGHT	12'
PARKING	Yes
UTILITIES	Yes
ZONING	M1-19

Welcome to the Cordage District! Join the amazing tenants of Mashpaddle Brewery, Bathtub Bakery, Cake & Crumb, Reach Gymnastics, Seventh Coffee Roastery and many more! Located right off Colbourne St W, this has easy access to main transit corridors of Brantford. Ample parking available throughout the complex. Property has a variety of zoning uses so easy for any business to start! Building has a mural and beautiful glass garage doors with office/retail space. Brick building with great frontage and parking makes this great for many different businesses/uses.

Keriann Harlow
Sales Representative

Office: 905.527.1144 Ext. 205
Email: harlow@bbsrealty.com

Evan Apostol
Broker

Office: 905.527.1144 Ext. 300
Email: apostol@bbsrealty.com

HAMILTON DOWNTOWN OFFICE

25 Main Street West, Suite 2025, Hamilton, ON L8P 1H1
P 905.527.1144 F 905.529.7474

The information contained herein is provided by the building owner or their agents or representatives and although such information has been obtained from sources considered to be reliable, Blair Blanchard Stapleton Limited makes no representation or warranty as to the accuracy or completeness thereof. The information contained herein is subject to change without notice.