

# BLAIR BLANCHARD STAPLETON

HALTON LTD.  
REAL ESTATE BROKERAGE

## INDUSTRIAL / OFFICE UNIT FOR LEASE

BBSREALTY.COM

**\$18.00**psf  
NET

**\$4.70**psf  
TMI 2024

**7,976**  
SQUARE FEET



## 1016 Sutton Dr, Building C, Unit 6-8, Burlington, ON

PROPERTY DETAILS

ASKING PRICE	\$18.00 psf net
TMI (2024)	\$4.70 psf
SIZE	7,976 sf
CLEAR HEIGHT	16'
DRIVE IN	3 (10' x 10')
LAB / OFFICE (%)	50/50
PARKING	Surface
TRUCK LEVEL	1 (8' x 8')
ZONING	BC1

Just under 8,000 sq.ft. of space with 3 drive-in loading doors and 1 truck level loading door. Space is very clean and set-up for a research lab.

**Kevin McAleese**

Broker of Record

Office: 905.634.4567 Ext. 23

Email: [mcaleese@bbsrealty.com](mailto:mcaleese@bbsrealty.com)

**Rod Wright**

Sales Representative

Office: 905.634.4567 Ext. 24

Email: [wright@bbsrealty.com](mailto:wright@bbsrealty.com)

### BURLINGTON OFFICE

5500 North Service Road, Suite 204, Burlington, ON L7L 6W6  
Phone: 905.634.4567 Fax: 905.637.8724

The information contained herein is provided by the building owner or their agents or representatives and although such information has been obtained from sources considered to be reliable, Blair Blanchard Stapleton Halton Ltd. makes no representation or warranty as to the accuracy or completeness thereof. The information contained herein is subject to change without notice.

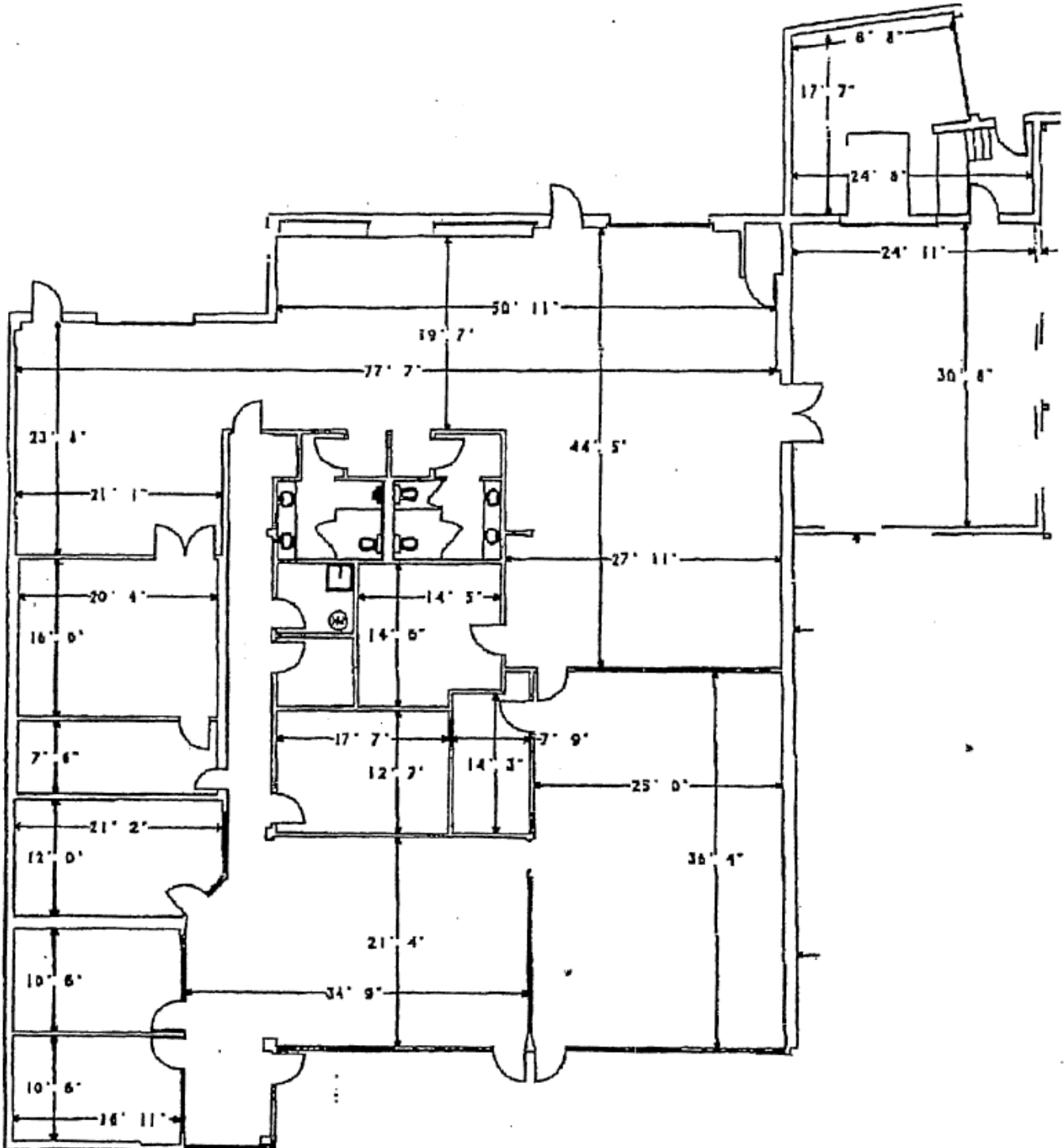
# BLAIR BLANCHARD STAPLETON

HALTON LTD.  
REAL ESTATE BROKERAGE

## INDUSTRIAL / OFFICE UNIT FOR LEASE

BBSREALTY.COM

### FLOOR PLAN



#### BURLINGTON OFFICE

5500 North Service Road, Suite 204, Burlington, ON L7L 6W6  
Phone: 905.634.4567 Fax: 905.637.8724

The information contained herein is provided by the building owner or their agents or representatives and although such information has been obtained from sources considered to be reliable, Blair Blanchard Stapleton Halton Ltd. makes no representation or warranty as to the accuracy or completeness thereof. The information contained herein is subject to change without notice.