

BLAIR BLANCHARD STAPLETON

LIMITED, REAL ESTATE BROKERAGE

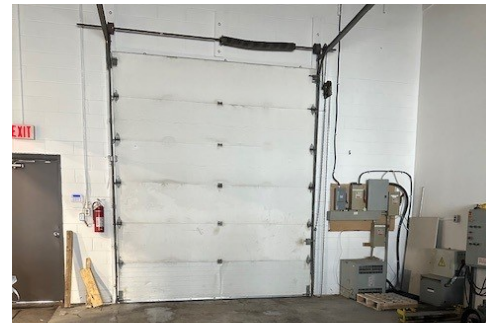
INDUSTRIAL UNIT FOR LEASE

BBSREALTY.COM

\$13.95 PSF
NET LEASE RATE

\$5.00 PSF
T.M.I. (2025)

2,500
SQUARE FEET



583 Barton Street, Unit 8-9, Stoney Creek, ON

Two units totaling 2,500 square feet .

Each unit is 25' x 50'.

Partial mezzanine above unit 9 for light storage.

Gary D Stapleton

Broker

Office: 905.529.5900 Ext. 227

Email: stapleton@bbsrealty.com

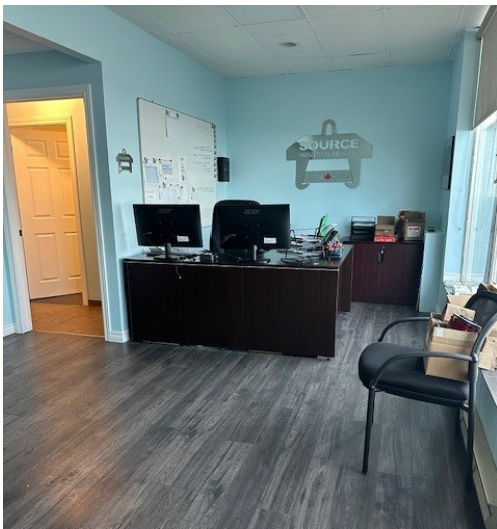
HAMILTON OFFICE

1425 Cormorant Road, Suite 303, Ancaster, ON L9G 4V5
P 905.529.5900 F 905.529.7474

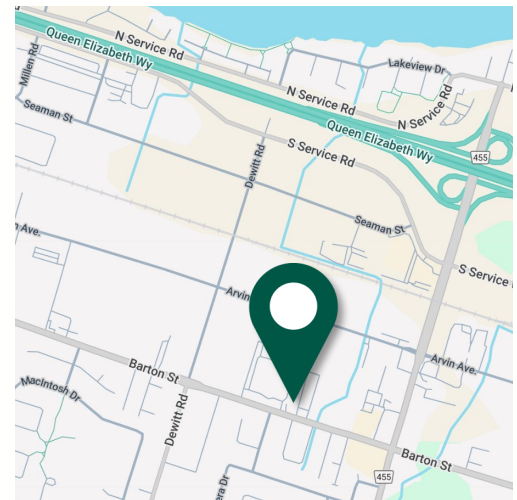
The information contained herein is provided by the building owner or their agents or representatives and although such information has been obtained from sources considered to be reliable, Blair Blanchard Stapleton Limited makes no representation or warranty as to the accuracy or completeness thereof. The information contained herein is subject to change without notice.

INDUSTRIAL UNIT FOR LEASE

Two units totalling 2,500 square feet. Each unit is 25' x 50'. Partial mezzanine above unit 9 for light storage.



UNIT DETAILS	
UNIT SIZE	2,500 sf
OFFICE SIZE	650 sf
DOORS: DRIVE-IN	(2) 12' x 10'
AIR CONDITIONING	yes
CLEAR HEIGHT	16 ft
MEZZANINE	partial (unit 9)
PARKING	yes
POWER	3 phase, 600V / 60A
ZONING	M3



HAMILTON OFFICE

1425 Cormorant Road, Suite 303, Ancaster, ON L9G 4V5
P 905.529.5900 F 905.529.7474

The information contained herein is provided by the building owner or their agents or representatives and although such information has been obtained from sources considered to be reliable, Blair Blanchard Stapleton Limited makes no representation or warranty as to the accuracy or completeness thereof. The information contained herein is subject to change without notice.