



# 3027 HARVESTER RD BURLINGTON, ON

**\$15.00 psf**  
Net Rent

**\$11.95 psf**  
Additional Rent (2024)

**1,584 – 3,593**  
Square Feet

- ▶ Centrally located near Harvester Road & Guelph Line minutes to QEW
- ▶ Combination of private & open office area
- ▶ Surface parking available (4.5/1,000 sf)
- ▶ Located close to restaurants and shopping
- ▶ Fully handicap accessible

Kevin J. McAleese  
Broker of Record  
905-634-4567  
[mcaleese@bbsrealty.com](mailto:mcaleese@bbsrealty.com)

Rod Wright, *B.A.Sc.*  
Sales Representative  
905-634-4567  
[wright@bbsrealty.com](mailto:wright@bbsrealty.com)

## NET RENT

\$15.00 psf

## ADDITIONAL RENT

\$11.95 psf (2024 est)

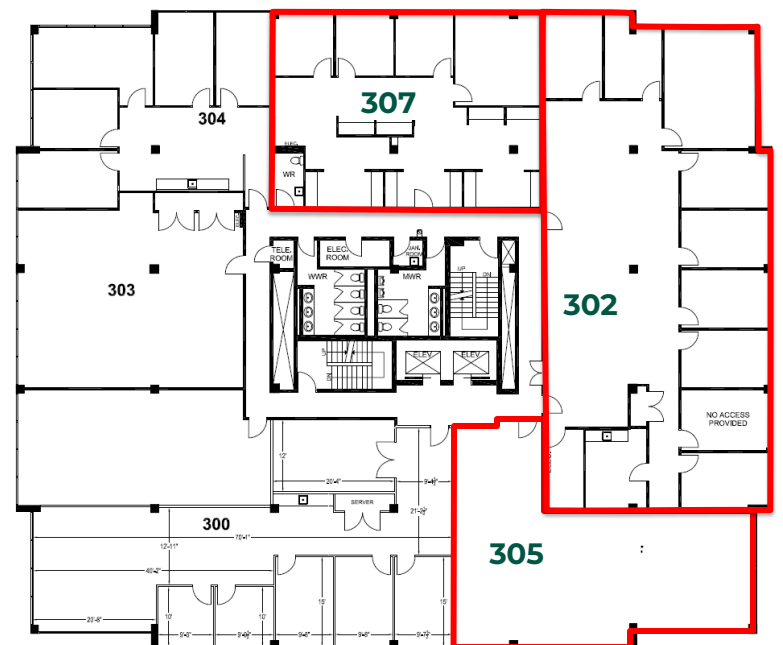
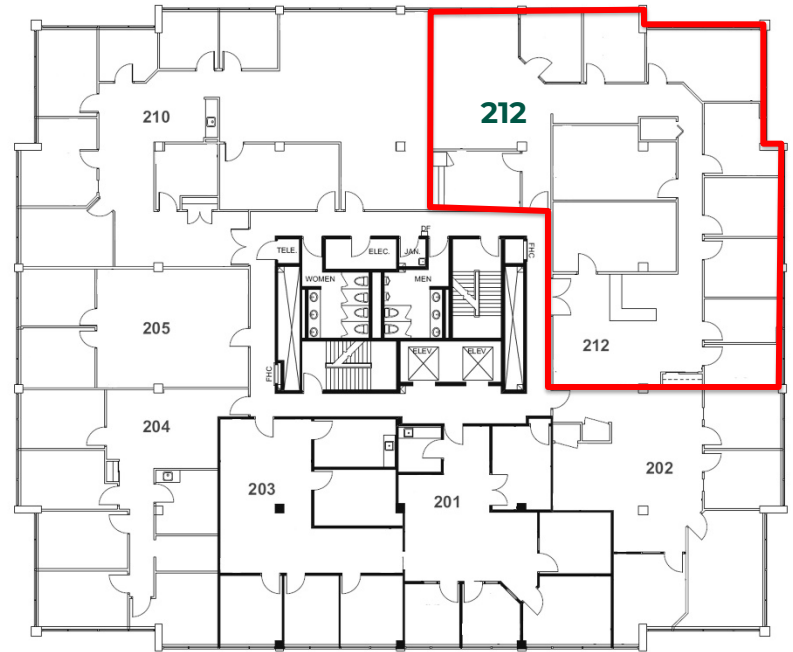
## AVAILABLE SUITES

Suite 212: 3,410 sq. ft.

Suite 302: 3,593 sq.ft.

Suite 305: 1,584 sq. ft.

Suite 307: 1,674 sq. ft. (sublease  
expiry Dec 31, 2025)



**Kevin J. McAleese**  
Broker of Record  
905-634-4567  
mcaleese@bbsrealty.com

**Rod Wright, B.A.Sc.**  
Sales Representative  
905-634-4567  
wright@bbsrealty.com

**BURLINGTON OFFICE**  
5500 North Service Road, Suite 204,  
Burlington, ON L7L 6W6  
O: 905.634.4567 F: 905.637.8724

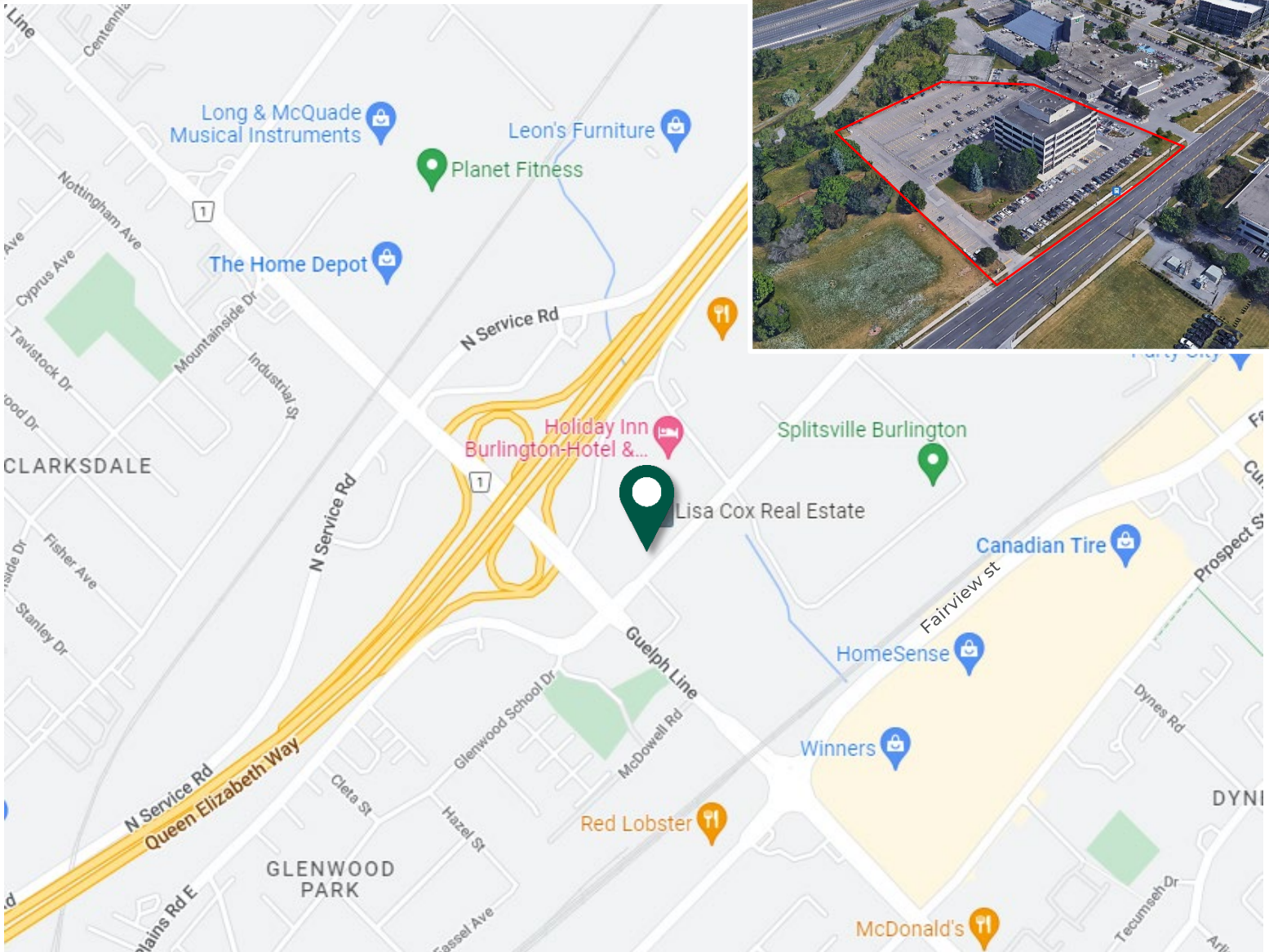
**BBSREALTY.COM**

# BLAIR BLANCHARD STAPLETON

HALTON LTD.  
REAL ESTATE BROKERAGE

# 3027

## HARVESTER RD BURLINGTON, ONTARIO



The information contained herein is provided by the building owner or their agents or representatives and although such information has been obtained from sources considered to be reliable, Blair Blanchard Stapleton Halton Ltd. makes no representation or warranty as to the accuracy or completeness thereof. The information herein contained is subject to change without notice.

**Kevin J. McAleese**  
Broker of Record  
905-634-4567  
mcaleese@bbsrealty.com

**Rod Wright, B.A.Sc.**  
Sales Representative  
905-634-4567  
wright@bbsrealty.com

**BURLINGTON OFFICE**  
5500 North Service Road, Suite 204,  
Burlington, ON L7L 6W6  
O: 905.634.4567 F: 905.637.8724

**BBSREALTY.COM**